

Ischioanal (ischiorectal) fossa

PREPARED BY

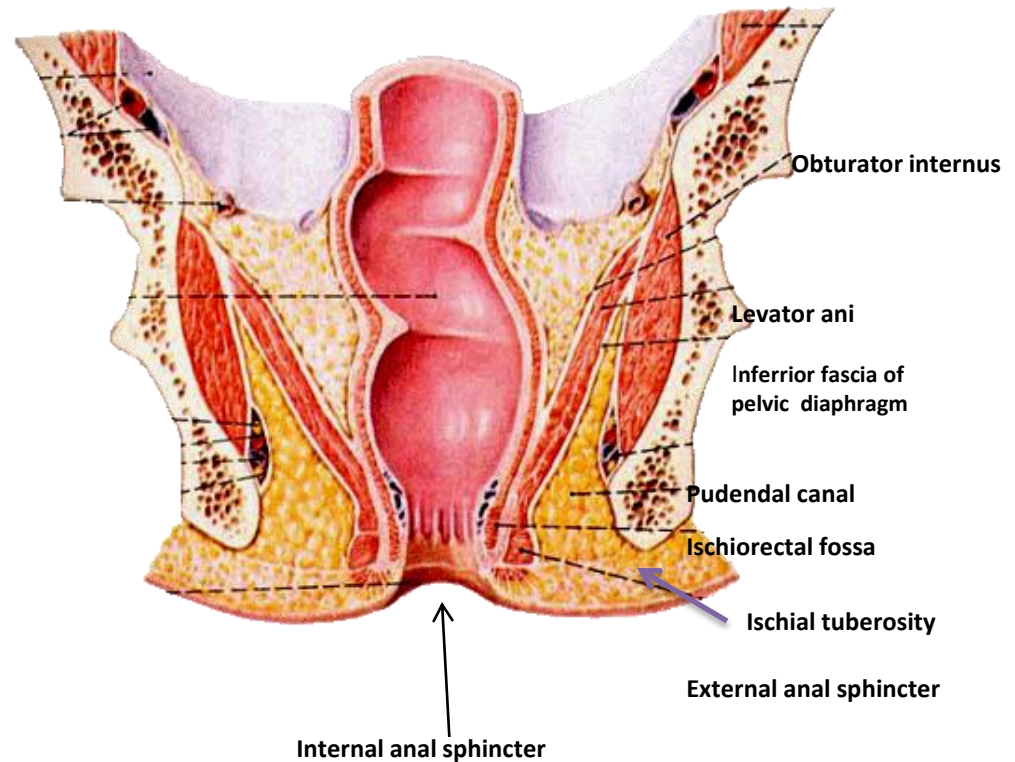
• **TALIB JAWAD**

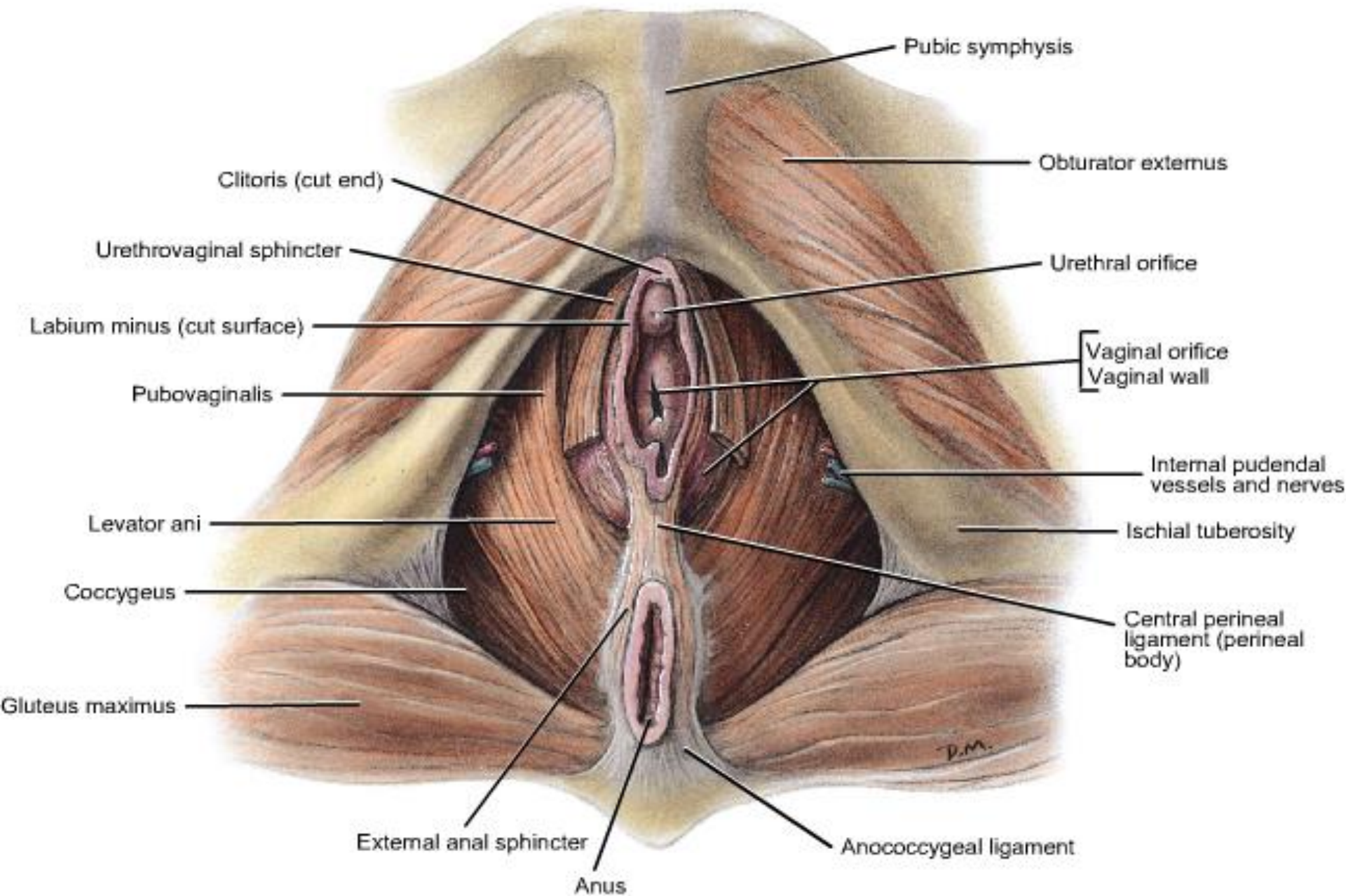
Ischioanal (ischiorectal) fossa

Paired, wedge-shaped, fat-filled spaces on either side of anal canal, the base directed downwards, towards the surface, and the apex upwards.

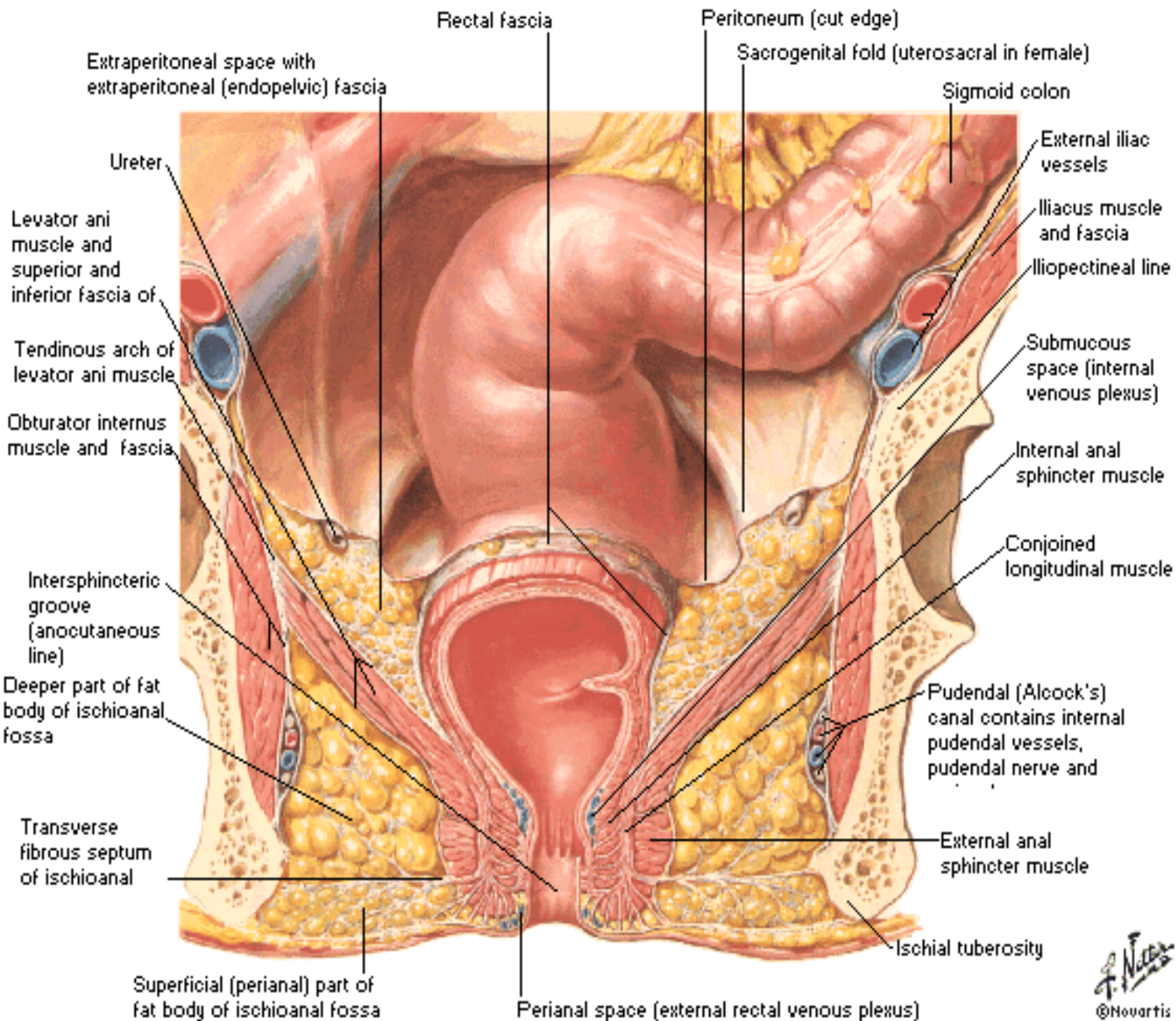
Boundaries

- **Apex** — conjunctive area of inferior fascia of pelvic diaphragm and fascia covering the obturator internus
- **Base** — skin of anal region
- **Medial** — External anal sphincter, levator ani, coccygeus and inferior fascia of pelvic diaphragm
- **Lateral** — ischial tuberosity, obturator internus and fascia





Ischioanal Fossa



2. middle third is the widest part of the rectum confined

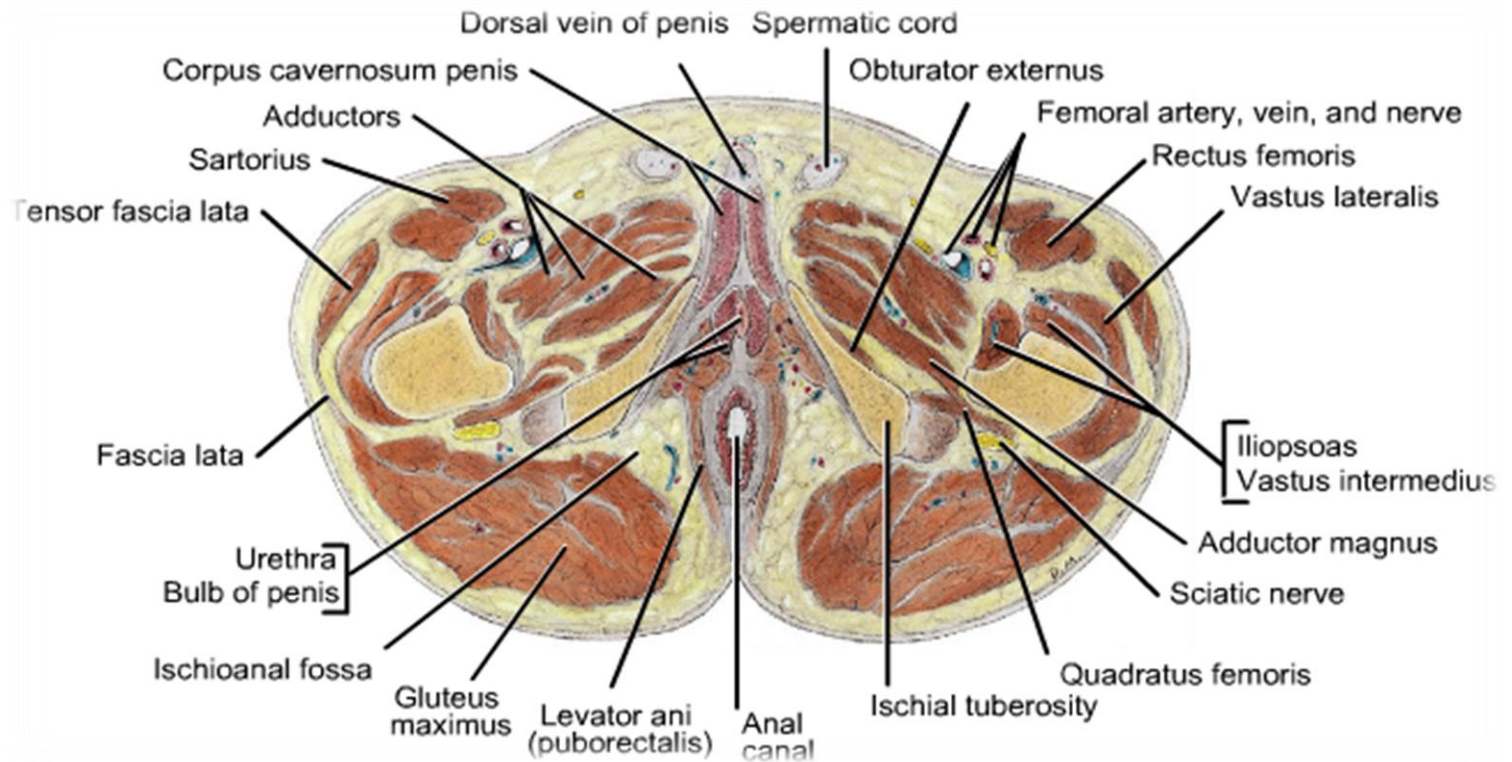
3- lowest third lies within the muscular floor of the pelvis. and has important relations to fascial layers.

- **Anterior**

- Posterior border of urogenital diaphragm
- Forward projection of anterior recess of fossa between pelvic diaphragm above and urogenital diaphragm below

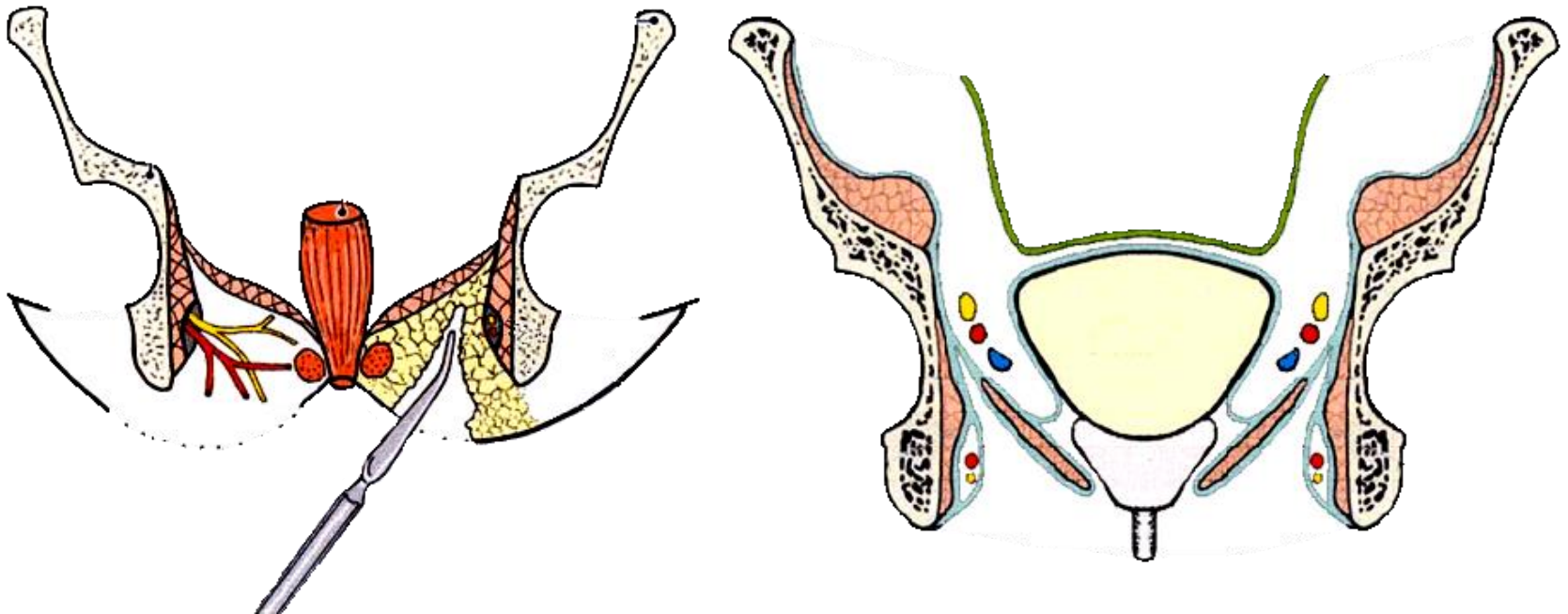
- **Posterior**

- backward projection of posterior recess of fossa between gluteus maximus, sacrotuberous ligament and coccyx



Contents

- Ischiorectal pad of Fat.
- Inferior rectal nerve and vessels.
- Posterior scrotal (or labial in females) nerves and vessels.
- Perineal branch of S4 nerve.
- Perforating cutaneous branches of S2,3 nerves.
- Internal pudendal artery and vein and Pudendal nerve within the pudendal canal.



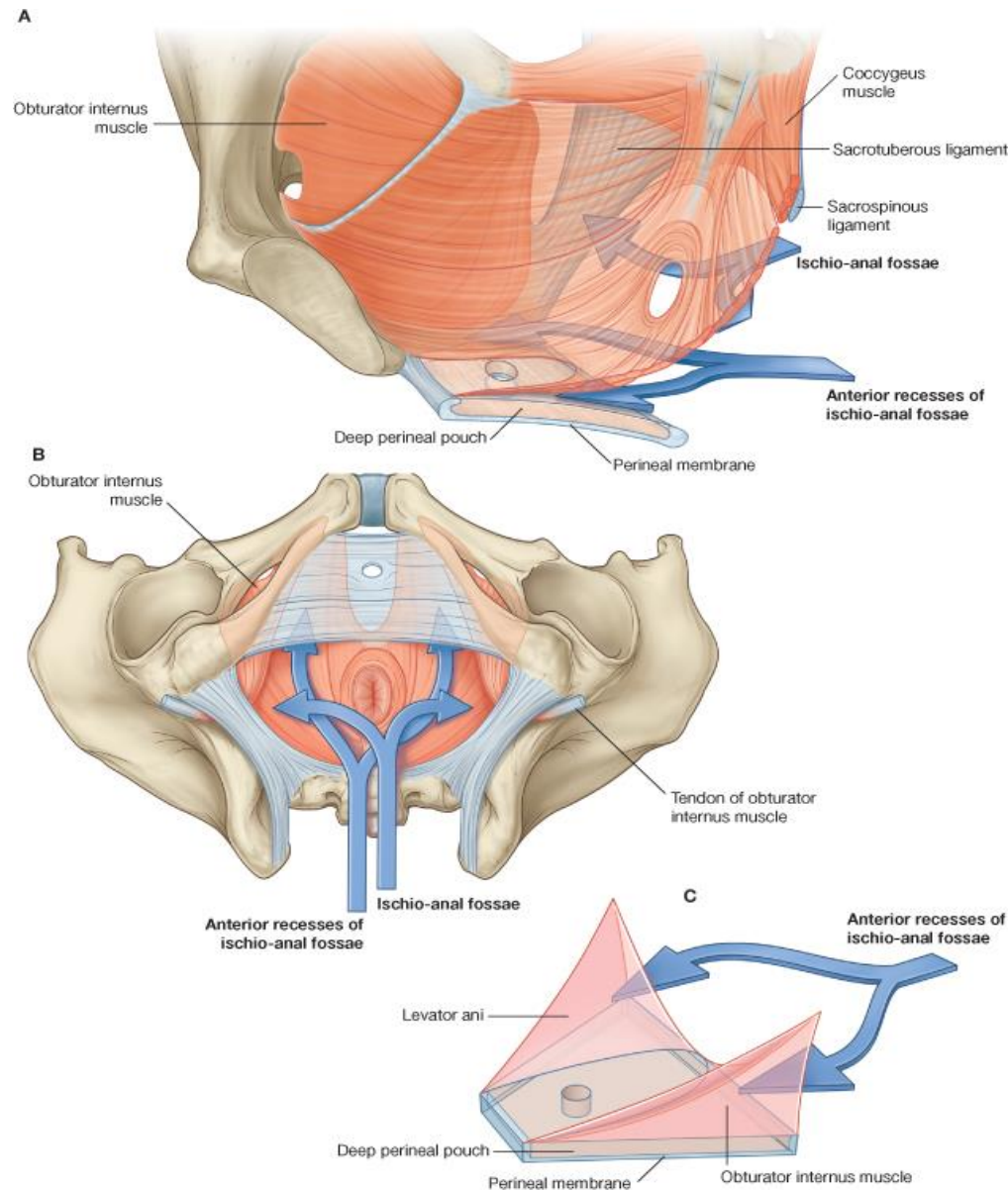
Ischioanal Recesses

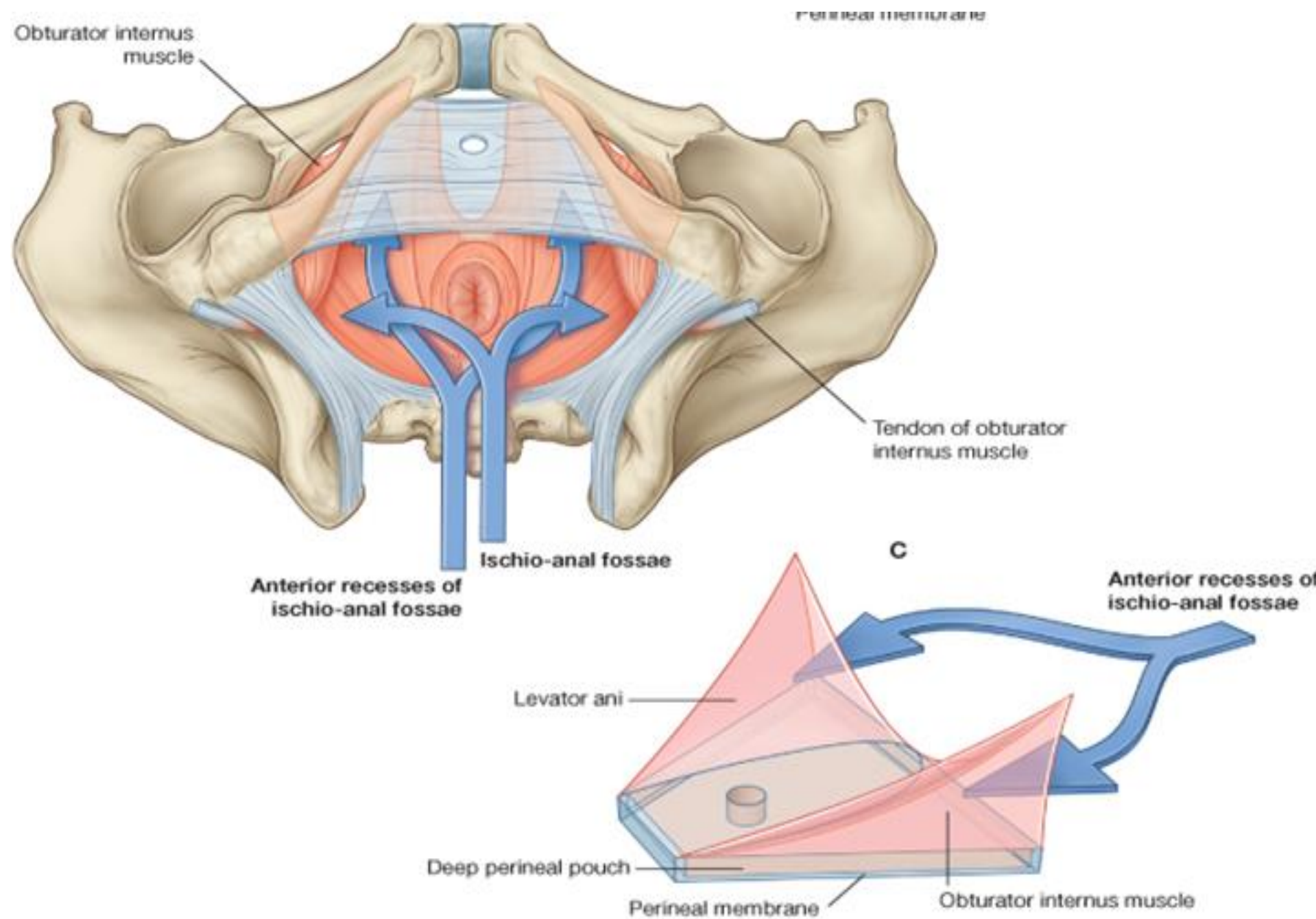
- These are narrow extensions of the fossa beyond its boundaries:

1. Anterior recess: Extend forward above the Urogenital diaphragm, almost up to the post surface of the body of pubis.

2. Posterior recess: it extend deep to sacrotuberous ligament.

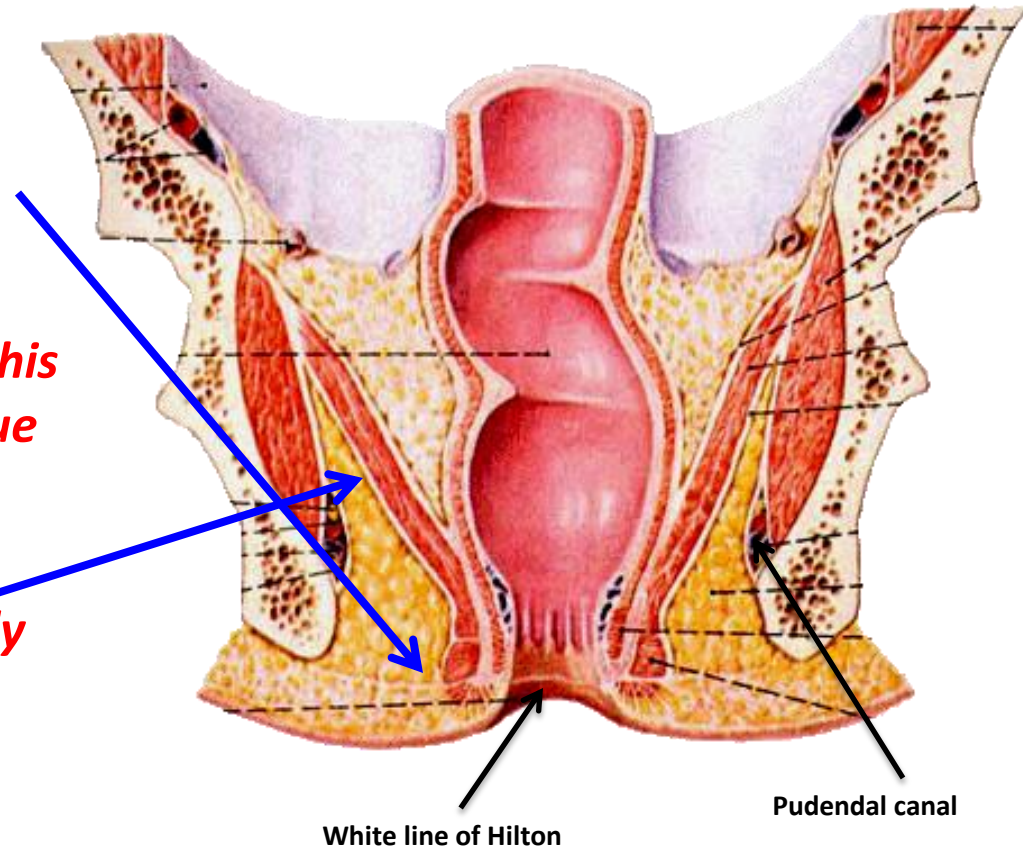
3. Horseshoe recess: connects the two fossae behind the anal canal.



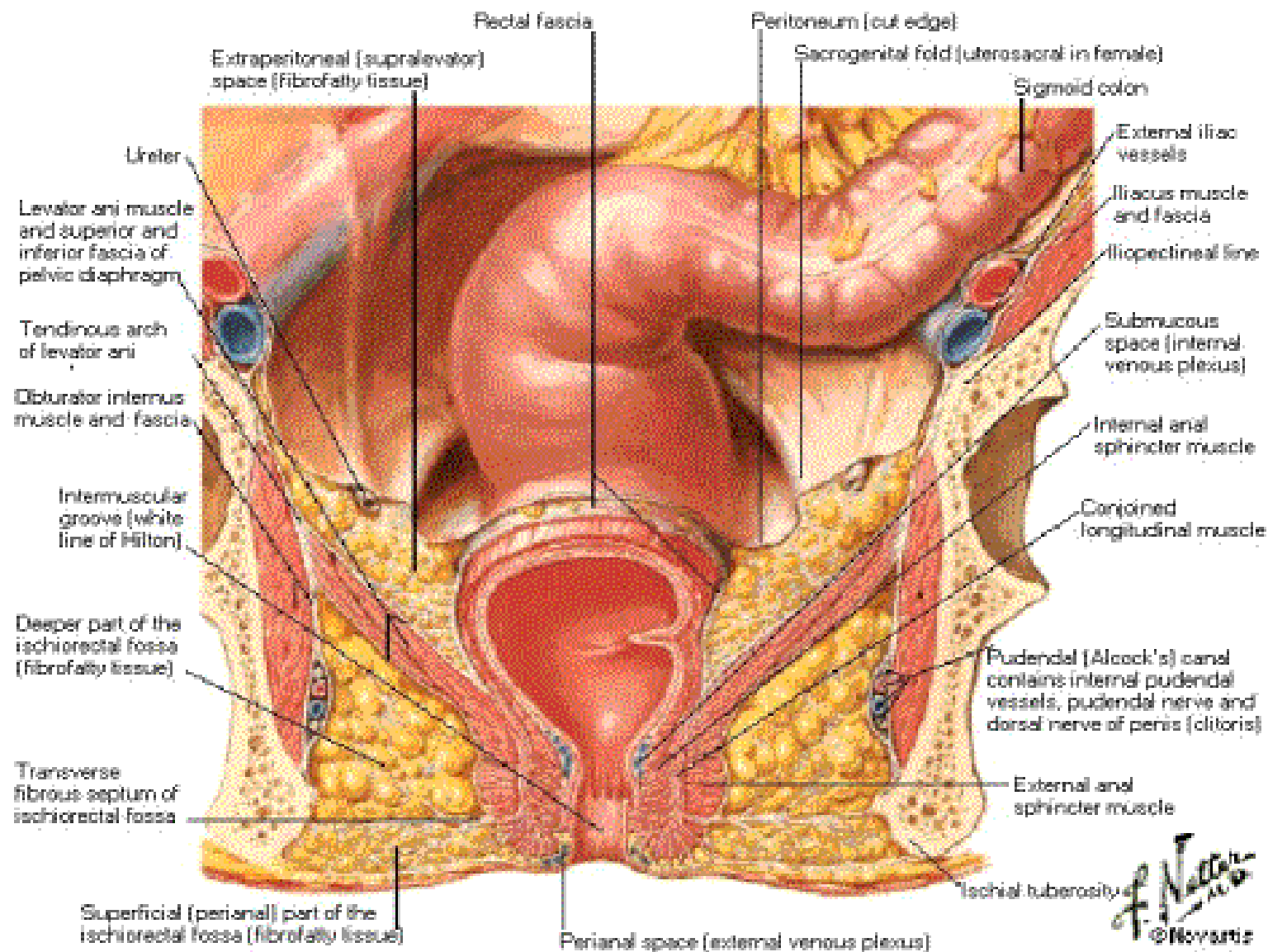


Spaces and canals of the Ischioirectal fossa

- **Perianal space:** It extends from the white line of Hilton medially to the pudendal canal laterally. *The fat in the perianal space is tightly arranged in small loculi formed by complete septa. The infections of this space are therefore very painful due to the tension caused by swelling.*
- **Ischioirectal space:** it is large and deep. *The fat in this space is loosely arranged in large loculi formed by incomplete delicate septa. The infection of this space are least painful because swelling can occur*



Ischiorectal Fossa



F. Netter M.D.
© Novartis